



GAT MONTHLY MEMBERSHIP PROGRESS REPORT

Results as of: 4/30/2023

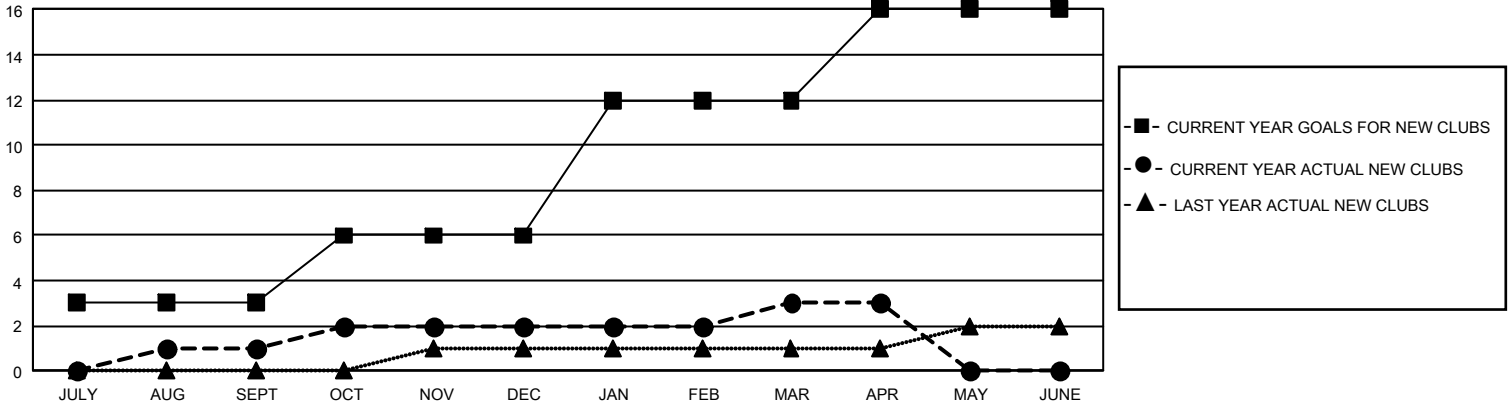
GMT Constitutional Area 1, Group K

REPORT DOES NOT INCLUDE CLUBS IN UNDISTRICTED AREAS.

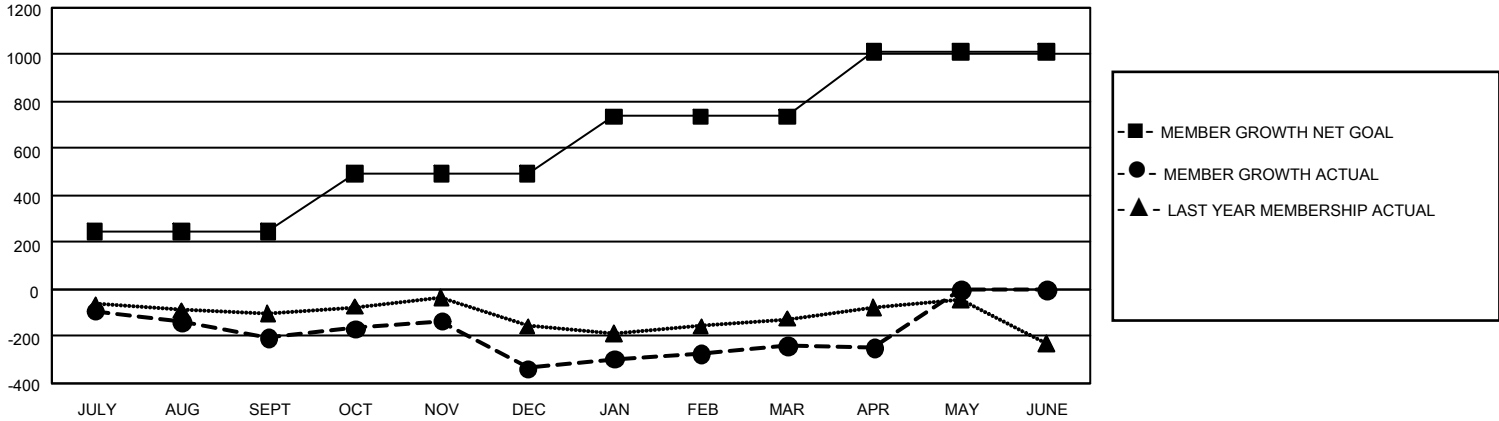
Clubs			
RESULTS FOR 2022-2023			
QUARTER	NEW CLUB GOAL	NEW CLUBS	DROPPED CLUBS
JULY/AUG/SEPT	9	1	0
OCT/NOV/DEC	9	1	4
JAN/FEB/MAR	18	1	2
APR/MAY/JUNE	12	0	0

Members			
RESULTS FOR 2022-2023			
QUARTER	MEMBER GROWTH NET GOAL	MEMBER GROWTH ACTUAL	DROPPED MEMBERS ACTUAL (including transfers)
JULY/AUG/SEPT	247	276	444
OCT/NOV/DEC	244	519	594
JAN/FEB/MAR	245	451	313
APR/MAY/JUNE	277	142	138

GOALS AND ACTUAL NEW CLUBS CUMULATIVE



GOALS AND ACTUAL MEMBERS CUMULATIVE



DROPPED CLUBS: 6 DROPPED MEMBERS DECEASED 236 CLUB CANCELLED 68 OTHER 1,185 TOTAL 1,489	338 CLUBS OF 583 ADDED 1 OR MORE NEW MEMBERS	GENDER DISTRIBUTION MALE 10,524 (61.42%) FEMALE 6,607 (38.56%) NON BINARY 0 (0.00%) PREFER NOT TO ANSWER 4 (0.02%)
	CLICK HERE FOR CUMULATIVE MEMBERSHIP DATA	TOTAL FAMILY UNIT MEMBERS 3,494 FAMILY MEMBERS PAYING HALF DUES 1,800